



# MONTHLY MEMBERSHIP PROGRESS REPORT

District 201Q1

Results as of: 05/31/2019

GMT: ANN ELDRIDGE

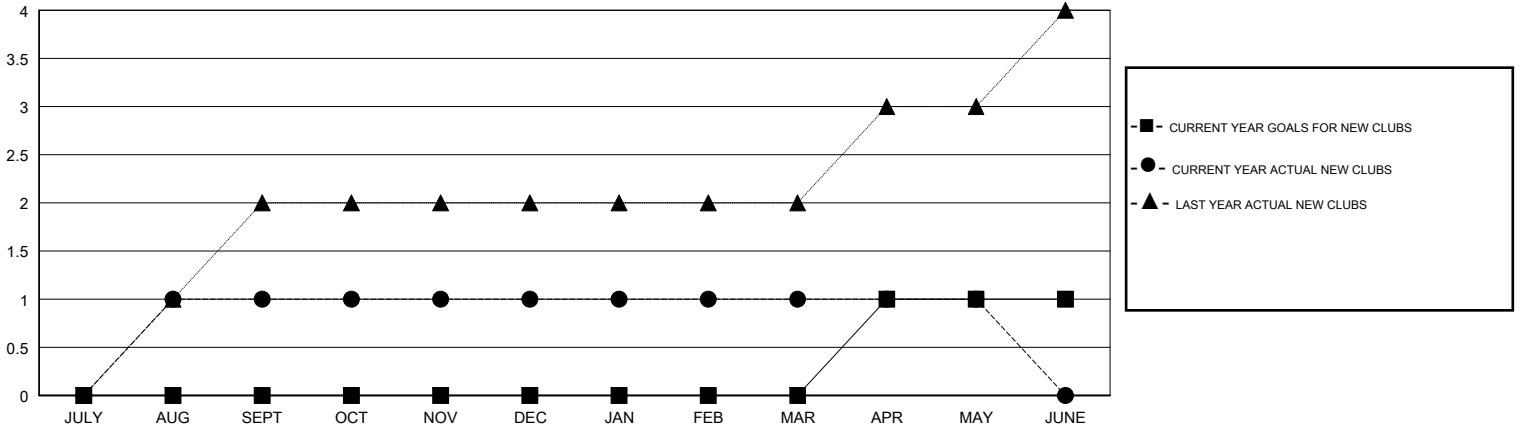
LOCATION AUSTRALIA

GMT CA

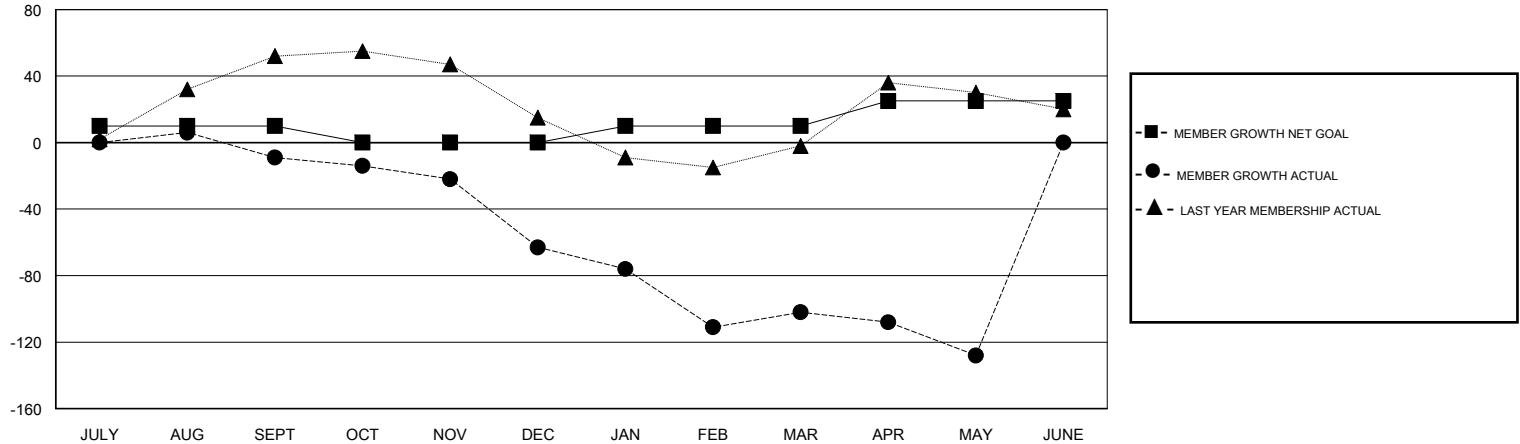
Clubs			
RESULTS FOR 2018-2019			
QUARTER	NEW CLUB GOAL	NEW CLUBS	DROPPED CLUBS
JULY/AUG/SEPT	0	1	1
OCT/NOV/DEC	0	0	0
JAN/FEB/MAR	0	0	0
APR/MAY/JUNE	1	0	0

Members			
RESULTS FOR 2018-2019			
QUARTER	MEMBER GROWTH NET GOAL	MEMBER GROWTH ACTUAL	DROPPED MEMBERS ACTUAL (including transfers)
JULY/AUG/SEPT	10	80	76
OCT/NOV/DEC	-10	45	91
JAN/FEB/MAR	10	43	80
APR/MAY/JUNE	15	34	56

GOALS AND ACTUAL NEW CLUBS CUMULATIVE



GOALS AND ACTUAL MEMBERS CUMULATIVE



DROPPED CLUBS: 1	57 CLUBS OF 83 ADDED 1 OR MORE NEW MEMBERS	<u>GENDER DISTRIBUTION</u> MALE 1,070 (59.68%) FEMALE 723 (40.32%) Women Percentage Fiscal Year Goal: 41%
DROPPED MEMBERS	<a href="#">CLICK HERE FOR CUMULATIVE MEMBERSHIP DATA</a>	TOTAL FAMILY UNIT MEMBERS 361
DECEASED 14		FAMILY MEMBERS PAYING HALF DUES 183
CLUB CANCELLED 0		
OTHER 289		
TOTAL 303		